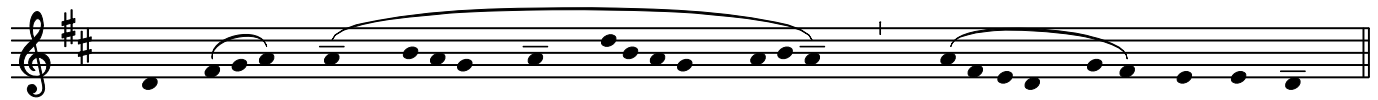


# Missa "De Angelis"

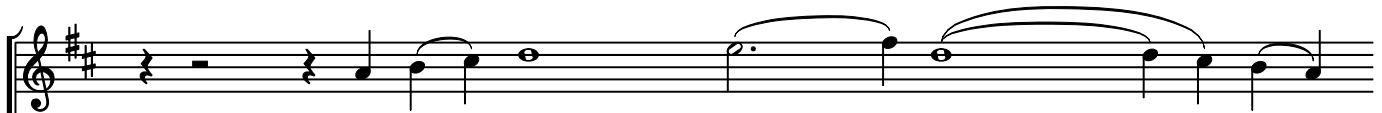
für drei gleiche Stimmen

## Kyrie

Wolfram Menschick



S/A Ky - ri - e \_\_\_\_\_ e - lei - son.



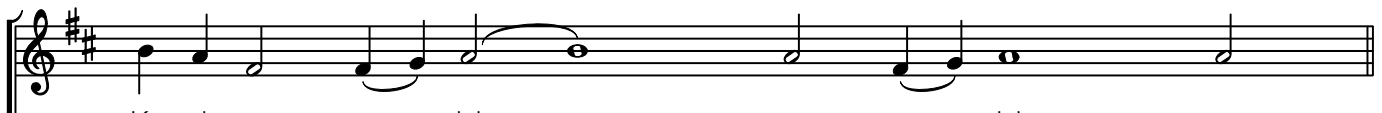
Ky - ri - e e - lei - son, \_\_\_\_\_



Ky - ri - e e - lei - son, \_\_\_\_\_ Ky - ri - e e



Ky - ri - e e - lei - son, Ky - ri -



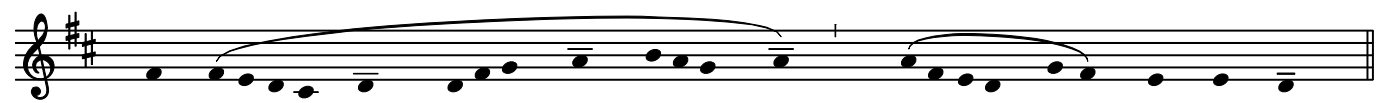
Ky - ri - e e - lei - son, e - lei - son.



lei - son, \_\_\_\_\_ e - lei - son, \_\_\_\_\_ e - lei - son.

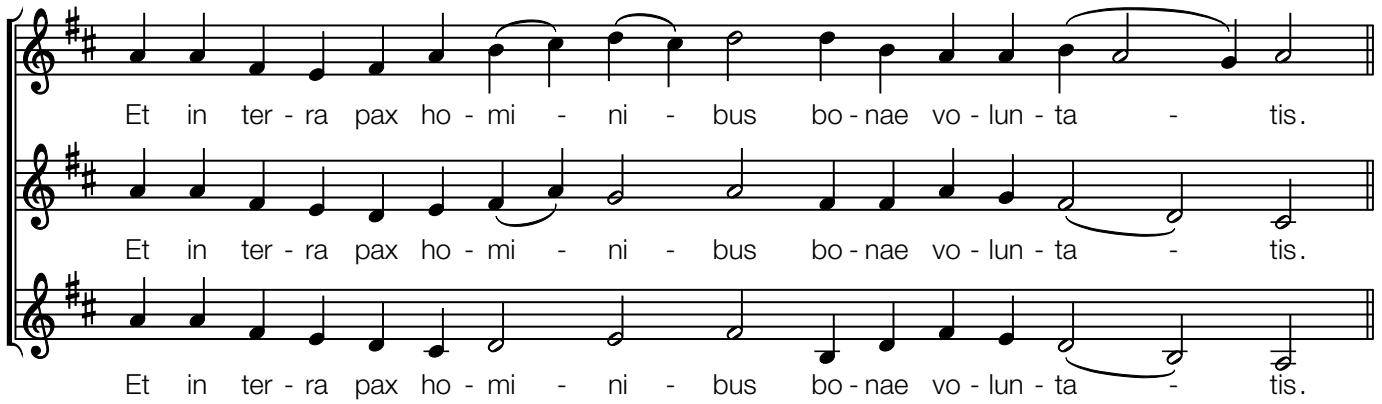


e \_\_\_\_\_ e - lei - son, Ky - ri - e e - lei - son.



S/A Chri - ste \_\_\_\_\_ e - lei - son.

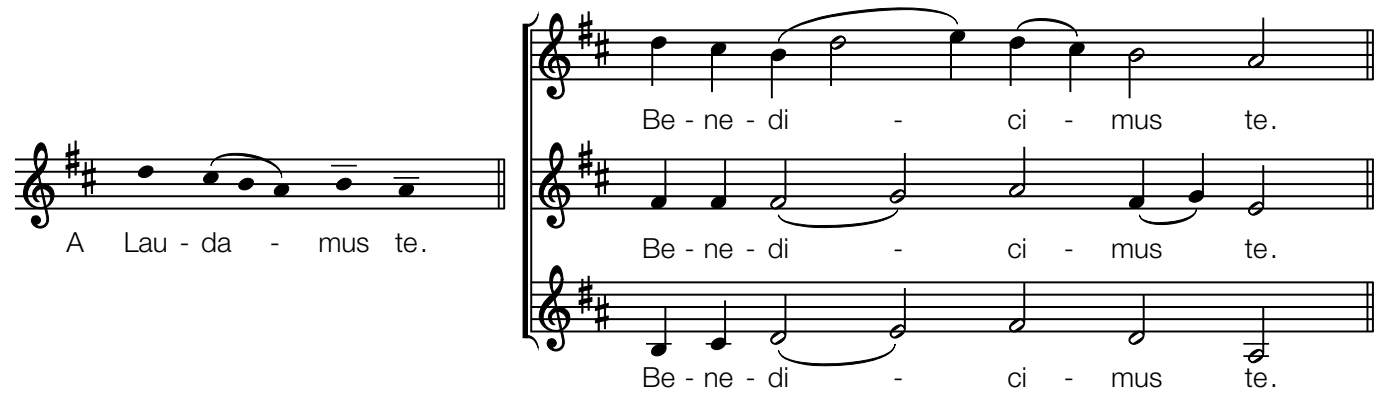
# Gloria



Et in ter - ra pax ho - mi - ni - bus bo - nae vo - lun - ta - tis.

Et in ter - ra pax ho - mi - ni - bus bo - nae vo - lun - ta - tis.

Et in ter - ra pax ho - mi - ni - bus bo - nae vo - lun - ta - tis.

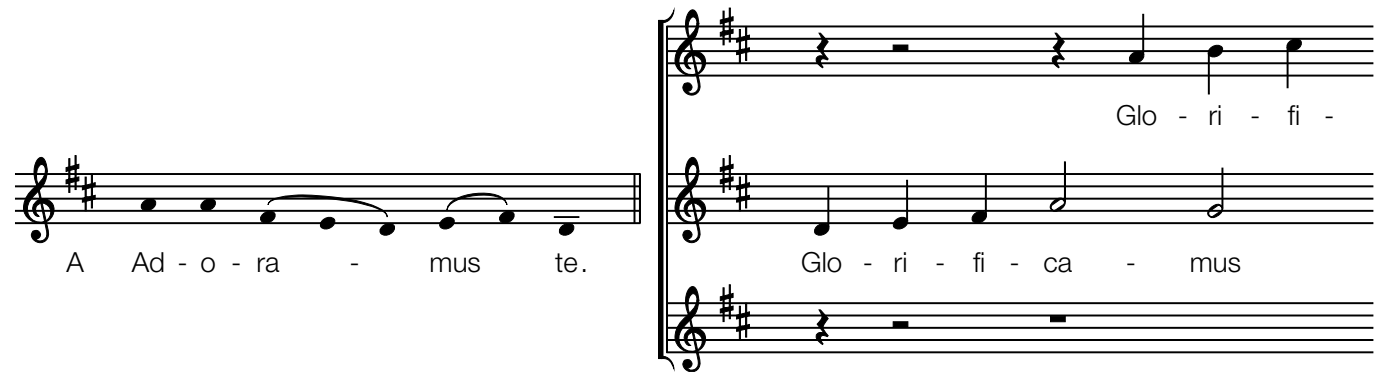


Be - ne - di - ci - mus te.

Be - ne - di - ci - mus te.

Be - ne - di - ci - mus te.

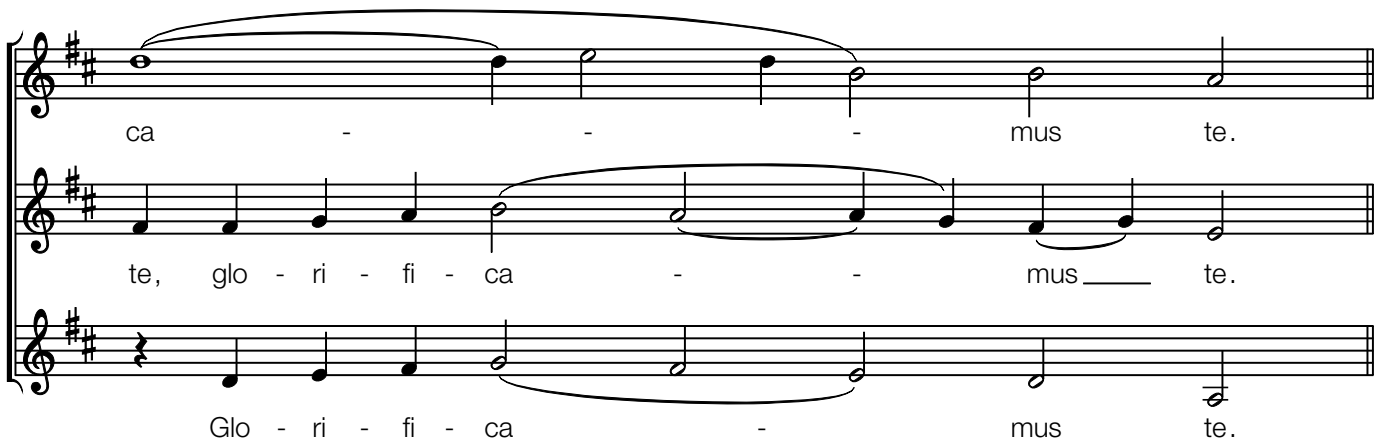
A Lau - da - mus te.



Glo - ri - fi -

Glo - ri - fi - ca - mus

A Ad - o - ra - mus te.



ca - mus te.

te, glo - ri - fi - ca - mus te.

Glo - ri - fi - ca - mus te.

Tu so - lus Al - tis - si - mus Je - su Chri - ste.

Tu so - lus Al - tis - si - mus Je - su Chri - ste.

Tu so - lus Al - tis - si - mus Je - su Chri - ste.

A Cum San - cto Spi - ri - tu, in glo - ri - a De - i Pa - tris.

A - - - men.

A - - - men.

A - - - men.

A - - - men.

## Sanctus

S San - - ctus A San - ctus, San - - ctus Do - mi - nus

De - us Sa - - - - - ba - oth.

Ple - ni sunt cae - - - li et

Ple - ni sunt cae - - - li et

Ple - ni sunt cae - - - li et

# Agnus Dei

A - gnus De - i,  
A - gnus De - i, qui tol -  
A - gnus De - i, qui

1. und 2. Agnus Dei

A mi - se - re - re no - bis.

3. Agnus Dei

A do na no - bis pa - cem.